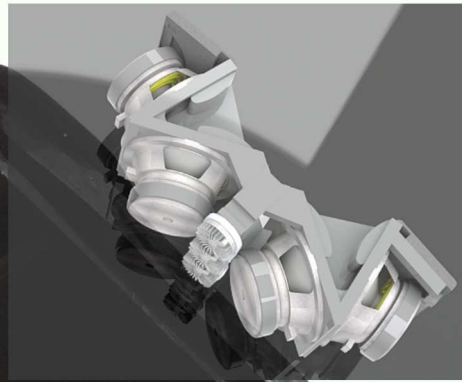




JAM

Ultra Compact vertical
controlled Line Source Array

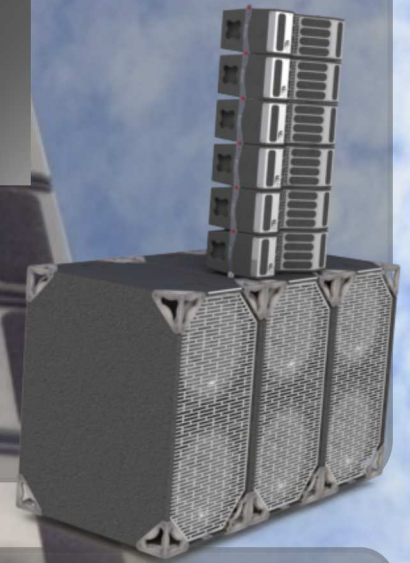
extra Compact
7 transducer in a 26 litres Box



Lc46

Specifications: XLT

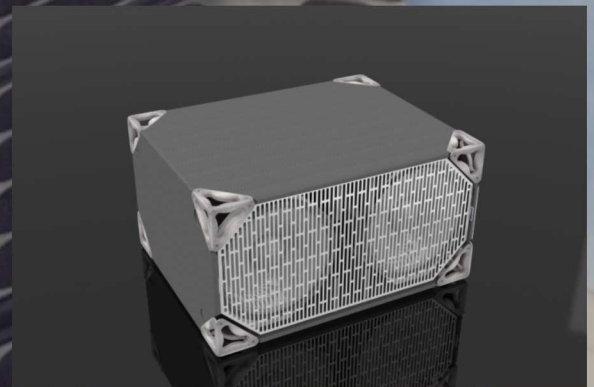
	Mid.	HI
Transducer	4x6.5"	3x1"
Power AES standard	800W	120W
Peak Power	1600W	240 W
Nominal imp.	8 Ohm	8 Ohm
Sensitivity	101 db	106 db
Máximun SPL	133 dB	132 dB
SPL Peak	137 dB	135 dB
Power itch box	900 W	
Frequency Responce	75hz - 20Khz	
Dispersion horiz.	120°	
Dispersion Vert.	Defined by the array 0° to 10° 2° changeable	
Connectors	2 Speakon NL4P	
Construction	Heavily braced multi-laminated 15mm plywood finished with textured black paint	
Fittings	Proprietary rigging System	
Net Weight	19Kg	



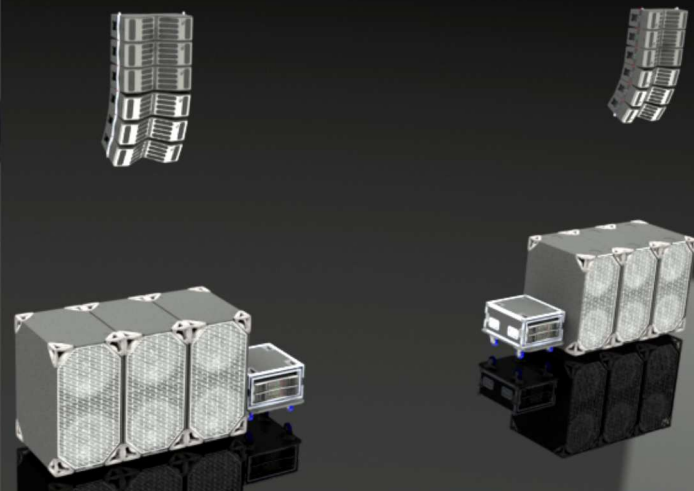
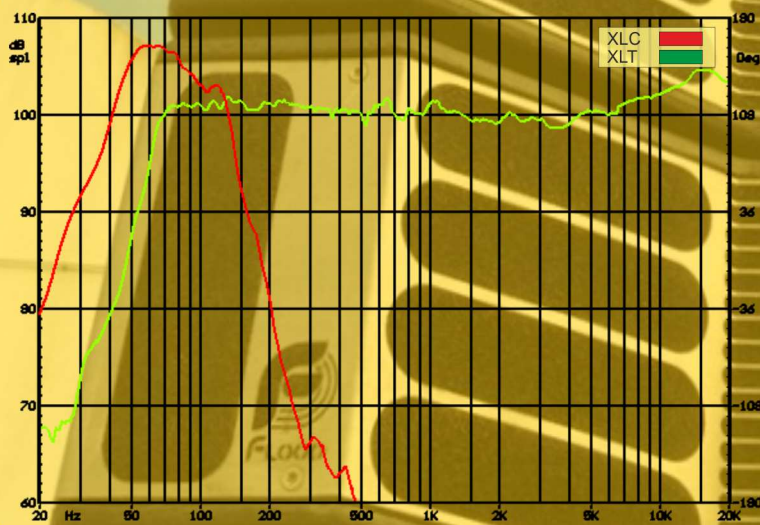
Specifications: SUB-XLC

Charge Type	Rear Horn loaded sub-woofer
Transducer	2 Custom 18"
Power AES standard	2800 W
Peak Power	14000 W
Nominal imp.	4 Ohm
Sensitivity	108 db
Máximun SPL	141 db continuous
SPL Peak	149 db Peak
Frequency Responce	32hz - 150hz
Dispersion	Omni
Ideal Crossover Points	HPF 28Hz- LPF 100Hz
Connectors	2 Speakon NL4P
Construction	Heavily braced multi-laminated 18mm plywood finished with textured Black Paint
Net Weight	75Kg

Xs218



FREQUENCY RESPONSE



Flood.Lda. - Rua S. Bento nº 186, Casais 3045-119 Coimbra - PORTUGAL

Tel: (00351) 239 984 002 Fax: (00351) 239 984 002 info@flood.pt www.flood.pt

